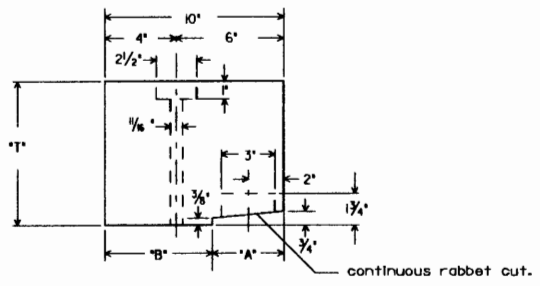
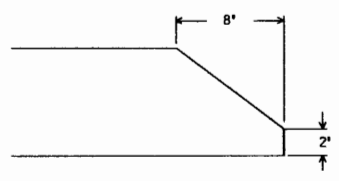


110# THRU 132# TIMBER

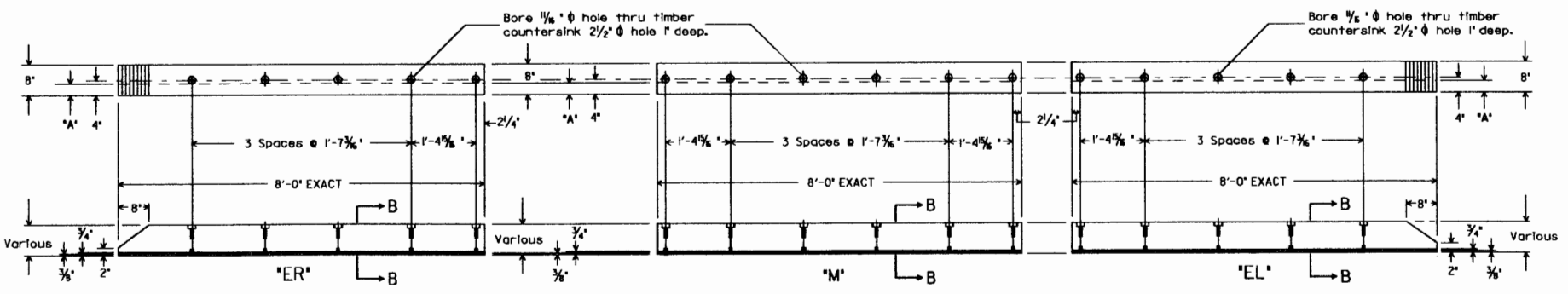


ENLARGED SECTION A-A

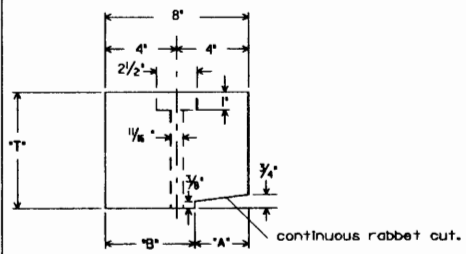


BEVEL CUT OF END TIMBERS

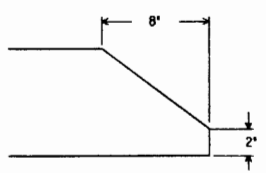
Weight of Roll	75#	80#	85#	90#	100#	110#	120#	132#
Thickness 'T' of Timbers for Various weights of Roll	5 3/4"	5 3/4"	5 3/4"	6 1/4"	6 1/2"	7"	7 1/2"	8"
Width 'W' of Timbers for Various weights of Roll	8"	8"	8"	8"	8"	10"	10"	10"
Dap 'A' of Timbers for Various weights of Roll	3"	3"	3"	3"	3"	3"	3"	4"
Base 'B' of Timbers for Various weights of Roll	5"	5"	5"	5"	5"	7"	7"	6"
Length of Spikes Required	10"	10"	10"	10"	12"	12"	12"	12"



75# THRU 100# TIMBER



ENLARGED SECTION B-B



BEVEL CUT OF END TIMBERS

NOTES

Timbers to be shaped and bored prior to creosote treatment. All daps will be cut into the bottom of the timber which is the wide surface closest to the heart.
 Tolerances: ±1/8" overall thickness, width, and length.
 ±1/4" on hole spacing and countersunk depth.
 +1/4" and -0" dap width.
 +1/8" and -0" dap thickness.

NORFOLK SOUTHERN RAILWAY COMPANY
**HIGHWAY GRADE CROSSING
 TREATED TIMBER**

DECEMBER 1989

Atlanta, Georgia

REVISION	
DATE	