

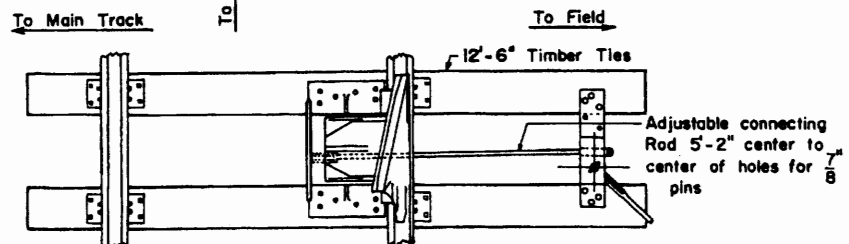
BILL OF SWITCH TIES 7" x 9"

No. of Pcs.	Length
12	9'-0"
7	9'-6"
2	14'-0"
Total No. of Pcs. 21	
Total L.in. Ft. 202.5	
Total F.B.M. 1,063	

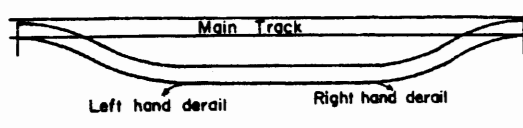
Double Switch Point Derail:
Plan of Double Switch Point Derail shows 15'-0" switch with switch plates spaced for No. 8 turnout, for illustration only. Other switch material may be used where advantageous.

SWITCH POINT DERAIL
To be used where grade descends toward main track and where LP gas tank cars are handled

- See Plan
- 1-4 For Bolts used in Track Construction
 - 3-25 Thru 3-35 For Switch Heel Blocks
 - 3-43 For Switch Lugs
 - 3-50 Thru 3-60 For Switch Plates
 - 3-61 Thru 3-64 For Adjustable Plates & Braces
 - 3-65 Thru 3-69 For Switch Stands

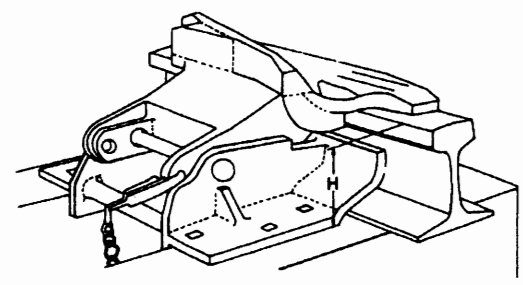


SLIDING DERAIL MODEL HB
With Operating Stand, Open
To be used where grade does not descend toward turnout.

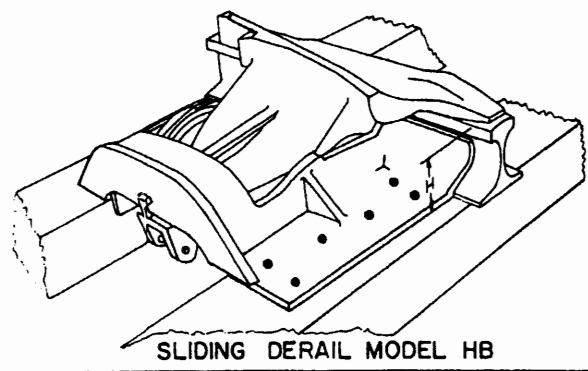


NOTES:
Size of Derail indicates vertical distance in inches from bottom of Derail to top of running rail.

- Order Size 4 - For rails lighter than 70-lb. A.S.C.E.
- Order Size 5 - For 70-lb. A.S.C.E. Rail through 85-lb. A.S.C.E.
- Order Size 6 - For 90-lb. A.R.A. Rail and 100-lb. Rail
- Order Size 7 - For R.E. 112-lb. Rail through 132-lb. Rail



HINGE DERAIL MODEL EB
To be used under special instruction.



SLIDING DERAIL MODEL HB

NORFOLK SOUTHERN RAILWAY CORPORATION

NOVEMBER, 1981
OFFICE OF ASST. V.P. M.W. & S.
Atlanta, Georgia