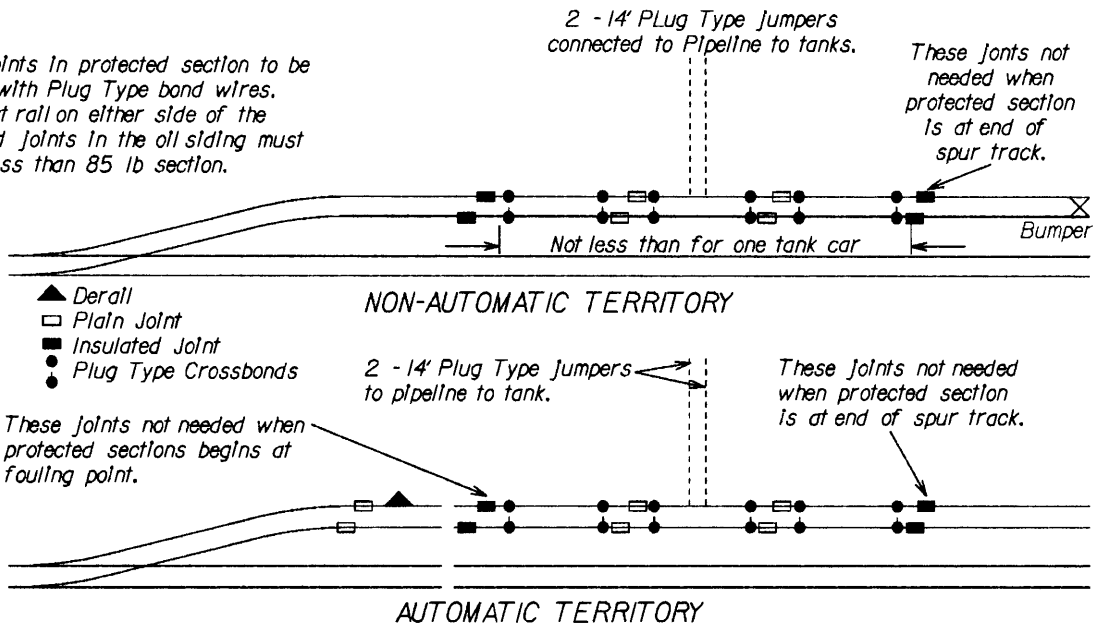


STANDARDS AND PROCEDURES OIL SIDING PROTECTION FROM STRAY ELECTRIC CURRENTS

Initial date 4/19/93 - Revised 4/19/93

NOTE:

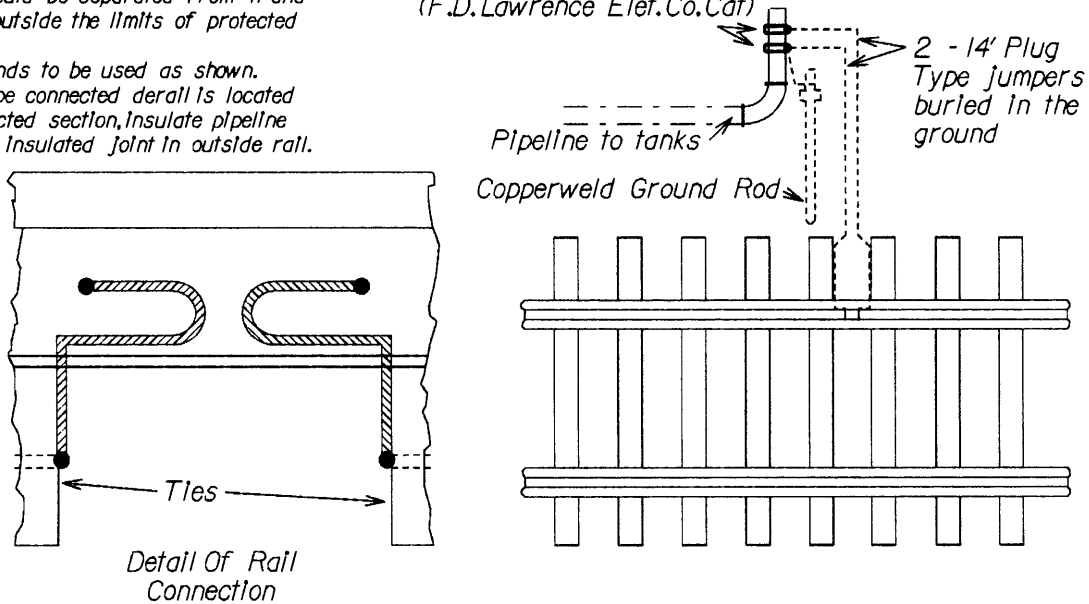
Plain joints in protected section to be bonded with Plug Type band wires. The first rail on either side of the insulated joints in the oil siding must be not less than 85 lb section.



NOTE:

Before unloading tank car, all other cars should be separated from it and placed outside the limits of protected section. Crossbands to be used as shown. When pipe connected deraill is located in protected section, insulate pipeline opposite insulated joint in outside rail.

Shawmut Ground Clamps
Nos. 3660 to 3668
(F.D. Lawrence Elec. Co. Cat)



"Holes for web bond connections must be at least 8 inches horizontally from any thermit rail weld."