

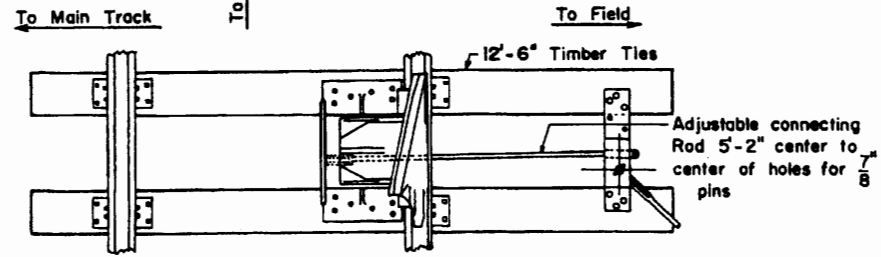
BILL OF SWITCH TIES 7" x 9"

No. of Pcs.	Length
12	9'-0"
7	9'-6"
2	14'-0"
Total No. of Pcs. 21	
Total Lin. Ft. 202.5	
Total F.B.M. 1,063	

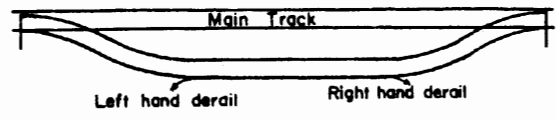
Double Switch Point Derail:
Plan of Double Switch Point Derail shows 15'-0" switch with switch plates spaced for No. 8 turnout, for illustration only. Other switch material may be used where advantageous.

- See Plan 1-4 For Bolts used in Track Construction
 3-25 Thru 3-35 For Switch Heel Blocks
 3-43 For Switch Lugs
 3-50 Thru 3-60 For Switch Plates
 3-61 Thru 3-64 For Adjustable Plates & Braces
 3-65 Thru 3-69 For Switch Stands

SWITCH POINT DERAIL
 To be used where grade descends toward main track and where L.P. gas tank cars are handled

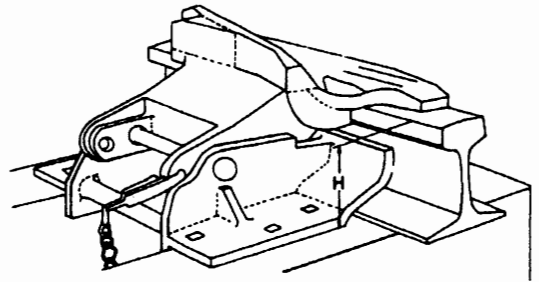


SLIDING DERAIL MODEL HB
 With Operating Stand, Open
 To be used where grade does not descend toward turnout.

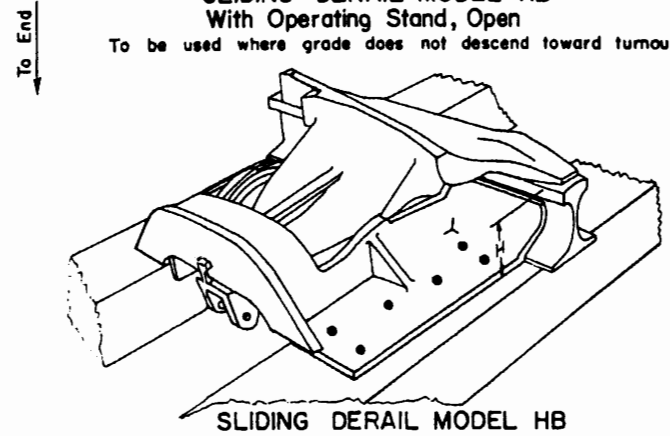


NOTES:
 Size of Derail indicates vertical distance in inches from bottom of Derail to top of running rail.

- Order Size 4 - For rails lighter than 70-lb. A.S.C.E.
 Order Size 5 - For 70-lb. A.S.C.E. Rail through 85-lb. A.S.C.E.
 Order Size 6 - For 90-lb. A.R.A. Rail and 100-lb. Rail
 Order Size 7 - For R.E. 112-lb. Rail through 132-lb. Rail



HINGE DERAIL MODEL EB
 To be used under special instruction.



NORFOLK SOUTHERN RAILWAY CORPORATION

NOVEMBER, 1981
 OFFICE OF ASST. V.P. M.W. & S.
 Atlanta, Georgia