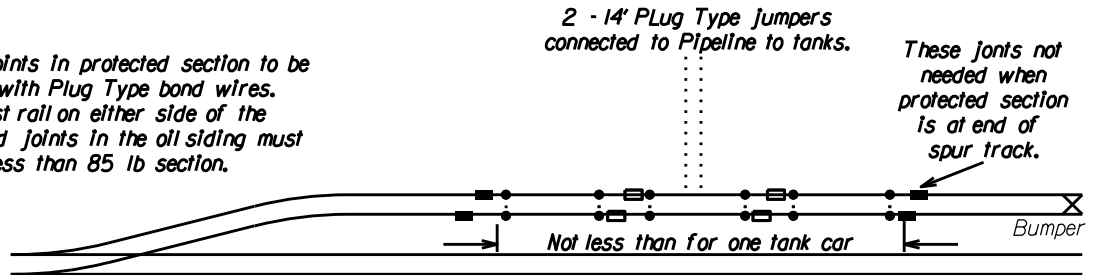


# STANDARDS AND PROCEDURES OIL SIDING PROTECTION FROM STRAY ELECTRIC CURRENTS

Initial date 4/19/93 - Revised 4/19/93

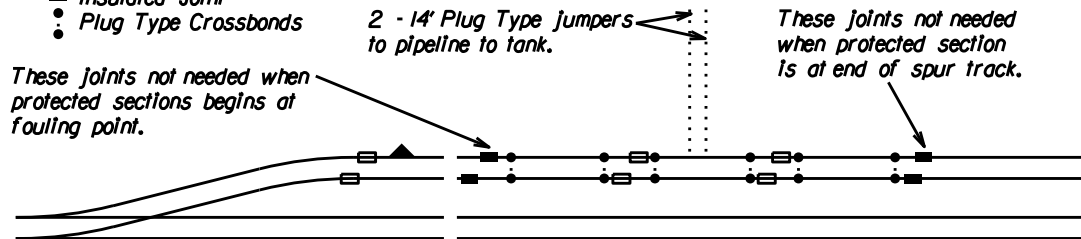
**NOTE:**

Plain joints in protected section to be bonded with Plug Type bond wires. The first rail on either side of the insulated joints in the oil siding must be not less than 85 lb section.



- ▲ Derail
- Plain Joint
- Insulated Joint
- Plug Type Crossbonds

### NON-AUTOMATIC TERRITORY



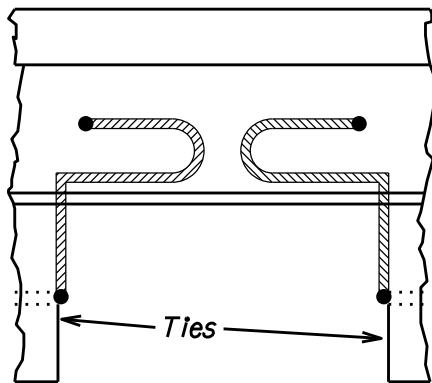
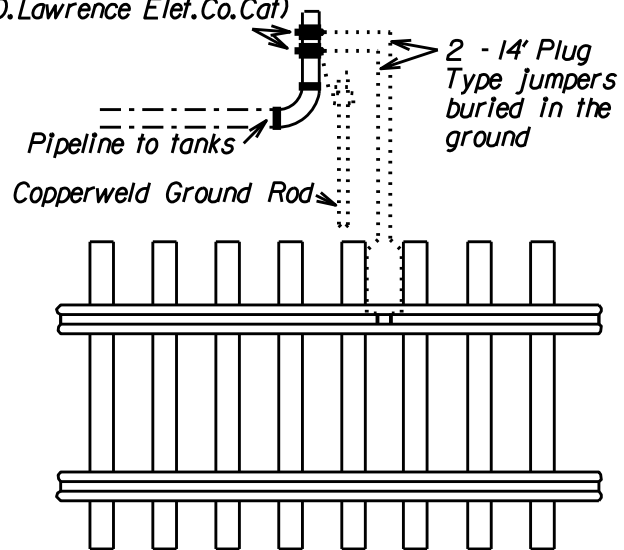
### AUTOMATIC TERRITORY

**NOTE:**

Before unloading tank car, all other cars should be separated from it and placed outside the limits of protected section.

Crossbonds to be used as shown. When pipe connected derail is located in protected section, insulate pipeline opposite insulated joint in outside rail.

Shawmut Ground Clamps  
Nos. 3660 to 3668  
(F.D. Lawrence Elet. Co. Cat)



Detail Of Rail Connection

*"Holes for web bond connections must be at least 8 inches horizontally from any thermit rail weld."*