

RUBBER FLANGE WAY NOTES

Clean base, web and under the head of the rail.
 Fasten lengths together with end clips and lay rubber against the rail.
 Install clips under both rails between every tie in the crossing.
 Rubber Flange Way for 100-LB Rail 270 99529I
 Rubber Flange Way for 110RE through 115RE Rail 270 991789
 Rubber Flange Way for 132RE through 141AB Rail 270 00879I
 (Includes all hardware and is furnished in 8 track foot sections.)

TIE PLATE NOTES

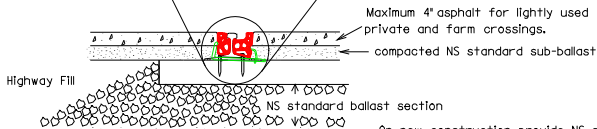
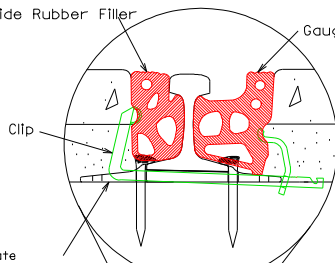
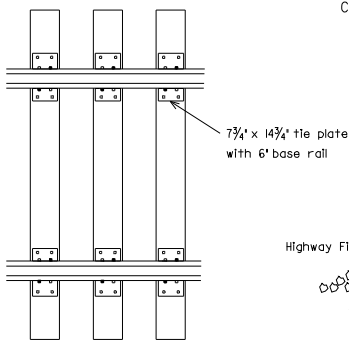
Worn plates must be replaced when crossing is renewed.
 Standard tie plates to be used for 6" base rail are 7 3/4" x 14 3/4".

ACUTE ANGLE CROSSING

Field Side Rubber Filler Gauge Side Rubber Flange Way

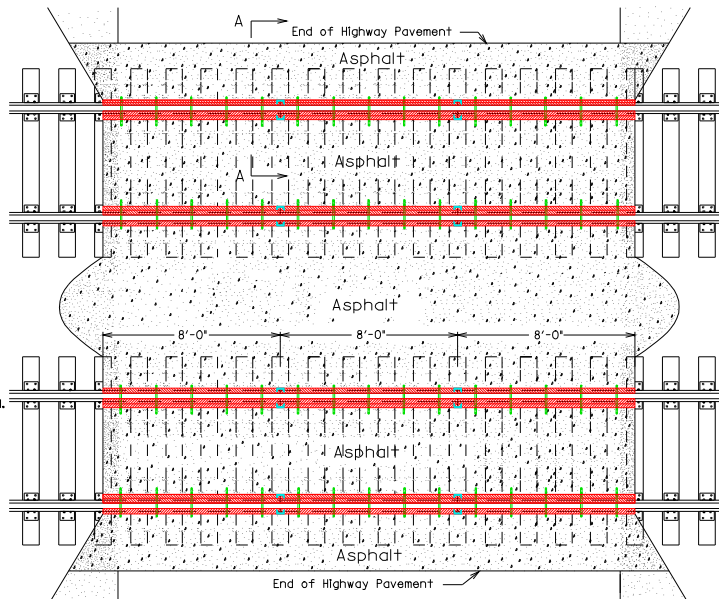
SPIKING PATTERN

All spikes for 110" thru 141" rail shall be driven in holes as shown below.



SECTION A-A

On new construction provide NS standard sub-ballast 6" thick, under full width and length of crossing.



RIGHT ANGLE CROSSING

PAVING NOTES

Pavement to be full depth asphalt, except lightly used private crossings and farm crossings. These type crossings are to have compacted NS standard sub-ballast with 4" maximum asphalt.
 Where highway or street have separate sidewalks, the entire width of crossing to the outside edge of sidewalk, will be paved, where practical.
 When necessary provide drainage between tracks.
 To allow for compaction of paving under vehicular traffic, the surface of the asphalt paving shall be raised 3/8" above the top of the rubber flange ways for the width of the roadway.
 In full depth crossings, lay asphalt in two lifts.
 Jam stone or asphalt under rubber flange way between ties - both field and gauge sides. FILL ALL VOIDS.

NORFOLK SOUTHERN RAILWAY COMPANY
HIGHWAY GRADE CROSSING
ASPHALT PAVING
WITH RUBBER FLANGE WAY

OCTOBER 2003

Atlanta, Georgia

REVISION	ADD. CLASS & ITEM NUMBER FOR 100-LB RAIL
DATE	11-16-03