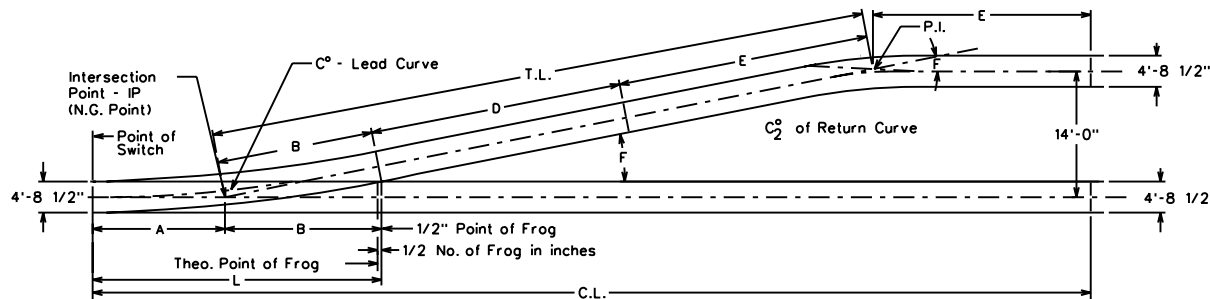


FROG NO.	L POINT OF SWITCH TO 1/2" POINT OF FROG	C° DEGREE OF CURVE CLOSURE RAILS	TURNOUT PLAN NO.	FROG		SWITCH			A P.S. TO INT. PT.	B I.P. TO 1/2" PT FROG	D 1/2" P.F. P.C. RET. CURVE	E TANG. RET. CURVE TO INT. PT.	T.L. I.P. TO P.I. RET. CURVE 14'-0" T.C.	C <sub>2</sub> ° DEGREE RET. CURVE	C.L. CLEAR LENGTH 14'-0" T.C.	C.L. CLEAR LENGTH 15'-0" T.C.	P.S. TO 16'-0" LAST TIMBER	CROSSOVER		LADDER TRACKS		FROG NO.
				F FROG ANGLE	FROG PLAN NO.	LENGTH	ANGLE	HEEL SPREAD										1/2" POINT OF FROG		1/2" POINT OF FROG		
																		TRACK CENTERS	TRACK CENTERS	TRACK CENTERS	TRACK CENTERS	
				14'-0"	15'-0"	14'-0"	15'-0"															
7	62'-1"	16° 31' 26"	2-2	8° 10' 16"	4-10	16'-6"	∠ 44' 11"	6 1/4"	28.83'	33.25'	39.59'	25.66'	98.50'	16° 00'	152.00'	158.96'	93'	30.99'	37.96'	98.50'	105.54'	7
8	58'-11 1/8"	10° 25' 03"	2-3	7° 09' 10"	4-10	curved 13'-0"	2° 54' 0"	6 1/4"	20.93'	38.00'	38.58'	35.86'	112.44'	10° 00'	168.35'	176.34'	84'	35.56'	43.53'	112.44'	120.47'	8
8	68'-0"	11° 58' 03"	2-4	7° 09' 10"	4-13	16'-6"	∠ 44' 11"	6 1/4"	30.00'	38.00'	44.54'	29.90'	112.44'	12° 00'	171.46'	179.43'	93'	35.56'	43.53'	112.44'	120.47'	8
9	72'-3 1/2"	9° 43' 14"	2-5	6° 21' 35"	4-10	16'-6"	∠ 44' 11"	6 1/4"	29.54'	42.75'	50.10'	33.55'	126.39'	9° 30'	188.70'	197.67'	100'	40.11'	49.08'	126.39'	135.41'	9
10	78'-9"	7° 21' 22"	2-7	5° 43' 29"	4-14	16'-6"	∠ 44' 11"	6 1/4"	31.25'	47.50'	54.63'	38.23'	140.35'	7° 30'	209.13'	219.10'	111'	44.65'	54.63'	140.35'	150.38'	10
12	95'-4"	5° 11' 20"	2-9	4° 46' 19"	4-15	22'-0"	∠ 18' 08"	6 1/4"	38.33'	57.00'	63.53'	47.76'	168.29'	5° 00'	253.80'	265.78'	129'	53.71'	65.69'	168.29'	180.31'	12
14	106'-0"	3° 51' 39"	2-10	4° 05' 27"	4-16	22'-0"	∠ 18' 08"	6 1/4"	39.50'	66.50'	78.58'	51.17'	196.25'	3° 45'	286.42'	300.40'	152'	62.76'	76.74'	196.25'	210.27'	14
15	111'-2 3/4"	3° 05' 30"	2-12	3° 49' 06"	4-17	26'-0"	0° 44' 47"	6 1/4"	39.98'	71.25'	70.53'	68.46'	210.23'	2° 48'	318.20'	333.22'	161'	67.27'	82.27'	210.23'	225.25'	15
15	126'-4 1/2"	3° 19' 48"	2-11	3° 49' 06"	4-17	30'-0"	0° 57' 18"	6 1/4"	55.13'	71.25'	75.31'	63.67'	210.23'	3° 15'	328.56'	343.54'	172'	67.27'	82.27'	210.23'	225.25'	15
20	156'-0 1/2"	∠ 43' 15"	2-15	2° 51' 51"	4-18	curved 39'-0"	∠ 04' 30"	6 1/4"	61.04'	95.00'	89.68'	95.50'	280.18'	∠ 30'	436.36'	456.35'	220'	89.82'	109.81'	280.18'	283.47'	20



NORFOLK SOUTHERN RAILWAY COMPANY  
**DATA ON TURNOUTS  
 AND CROSSOVERS**  
 RETURN CURVES AND LADDERS

JULY 1997  
 Atlanta, Georgia

DATE	REVISION
8-14-03	ADD NO. 15 TURNOUT WITH 26'-0" POINTS
3-15-06	REMOVE NO. 6 TURNOUT
3-24-08	CORRECT "E" ON NO. 14 & "TL" ON 15