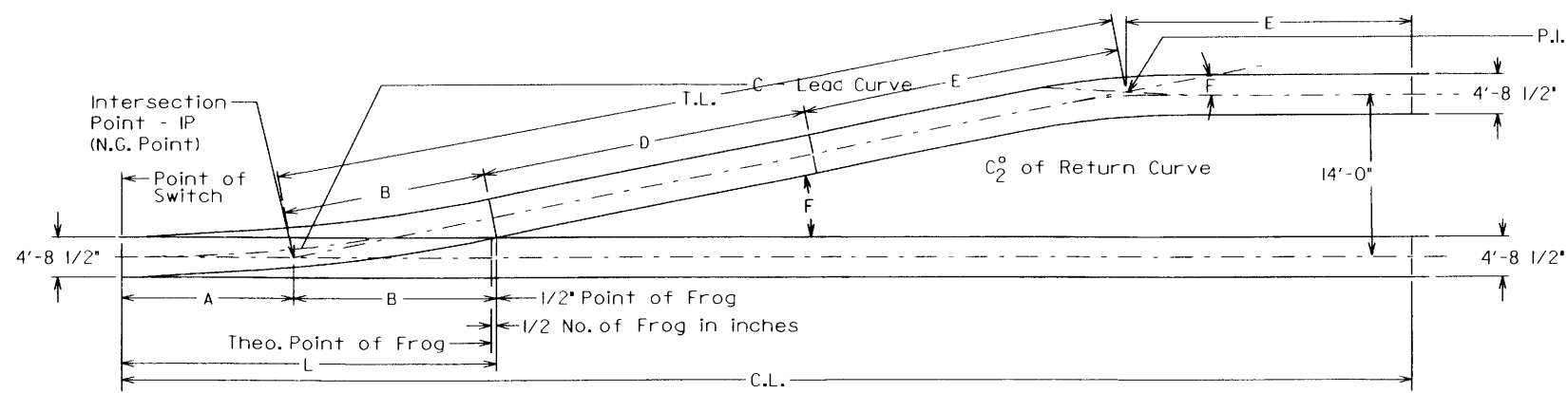


FROG NO.	TURNOUT									A P.S. TO INT. PT.	B I.P. TO 1/2* PT. FROG	D 1/2* P.F. P.C. RET. CURVE	E TANG. RET. CURVE TO INT. PT.	T.L. I.P. TO P.I. RET. CURVE 14'-0" T.C.	C ₂ DEGREE RET. CURVE	C.L. CLEAR LENGTH 14'-0" T.C.	C.L. CLEAR LENGTH 15'-0" T.C.	P.S. TO 16'-0" LAST TIMBER	CROSSOVER		LADDER TRACKS		FROG NO.
	L POINT OF SWITCH TO 1/2* POINT OF FROG	C° DEGREE OF CURVE & CLOSURE RAILS	TURNOUT PLAN NO.	FROG		SWITCH			1/2* POINT OF FROG										1/2* POINT OF FROG				
				F FROG ANGLE	FROG PLAN NO.	LENGTH	ANGLE	HEEL SPREAD	TRACK CENTERS										TRACK CENTERS				
									14'-0"										15'-0"	14'-0"	15'-0"		
6	47'-5"	22°17' 58"	2-1	9°31' 38"	4-10	11'-0"	2°39' 34"	6 1/4"	19.00'	28.50'	34.25'	21.84'	84.58'	22°00'	124.25'	130.21'	66'	26.42'	32.38'	84.58'	90.63'	6	
7	62'-1"	16°31' 26"	2-2	8°10' 16"	4-10	16'-6"	1°44' 11"	6 1/4"	28.83'	33.25'	39.59'	25.66'	98.50'	16°00'	152.00'	158.96'	93'	30.99'	37.96'	98.50'	105.54'	7	
8	58'-11 1/8"	10°25' 03"	2-5	7°09' 10"	4-10	curved 13'-0"	2°54' 0"	6 1/4"	20.93'	38.00'	38.58'	35.86'	112.44'	10°00'	168.35'	176.34'	84'	35.56'	43.53'	112.44'	120.47'	8	
8	68'-0"	11°58' 03"	2-4	7°09' 10"	4-13	16'-6"	1°44' 11"	6 1/4"	30.00'	38.00'	44.54'	29.90'	112.44'	12°00'	171.55'	179.43'	93'	35.56'	43.53'	112.44'	120.47'	8	
9	72'-3 1/2"	9°43' 14"	2-6	6°21' 35"	4-10	16'-6"	1°44' 11"	6 1/4"	29.54'	42.75'	50.10'	33.55'	126.39'	9°30'	188.70'	197.67'	100'	40.11'	49.08'	126.39'	135.41'	9	
10	78'-9"	7°21' 22"	2-7	5°43' 29"	4-14	16'-6"	1°44' 11"	6 1/4"	31.25'	47.50'	54.63'	38.23'	140.35'	7°30'	209.13'	219.10'	111'	44.65'	54.63'	140.35'	150.38'	10	
12	95'-4"	5°11' 20"	2-9	4°46' 19"	4-15	22'-0"	1°18' 08"	6 1/4"	38.33'	57.00'	63.53'	47.76'	163.29'	5°00'	253.80'	265.78'	129'	53.71'	65.69'	168.29'	180.31'	12	
14	106'-0"	3°51' 39"	2-10	4°05' 27"	4-16	22'-0"	1°18' 08"	6 1/4"	39.50'	66.50'	78.58'	81.17'	196.25'	3°45'	286.42'	300.40'	152'	62.76'	76.74'	196.25'	210.27'	14	
15	126'-4 1/2"	3°19' 48"	2-11	3°49' 06"	4-17	30'-0"	0°57' 18"	6 1/4"	55.13'	71.25'	75.31'	63.67'	210.18'	3°15'	328.56'	343.54'	172'	67.27'	82.26'	210.23'	225.25'	15	
20	156'-0 1/2"	1°43' 15"	2-15	2°51' 51"	4-18	curved 39'-0"	1°04' 30"	6 1/4"	61.04'	95.00'	89.68'	95.50'	280.18'	1°30'	436.36'	456.35'	220'	89.82'	109.81'	280.18'	283.47'	20	

DATE: 1-26-00
 REVISION: CHANGED LENGTH OF NO. 14 TURNOUT



NORFOLK SOUTHERN RAILWAY COMPANY
DATA ON TURNOUTS
AND CROSSOVERS
RETURN CURVES AND LADDERS
 JULY 1997
 Atlanta, Georgia